



# BACK BAR 27" STANDARD DEPTH STORAGE COOLERS



127136

127134  
127135  
127136

126987  
127143  
127145

## SPECIFICATIONS/FEATURES

### Construction

- Exterior: Black 10 mil thick wear resistant vinyl or stainless steel front with Grey ends and back.
- Tops: Heavy duty seamless stainless steel counter top.
- Interior: Long lasting, heavy duty rust resistant galvanized steel for walls and ceilings.
- Floor: Stainless steel reinforced floor and doorsill (breakers) are made from heavy duty stainless steel to provide lasting service.
- Cabinet insulation is energy saving foamed-in-place, CFC-free polyurethane, that helps to provide maximum operating efficiency; and also enhances the structural strength of the overall construction of the cabinet. Minimum of 2" thick.
- Easily accessible front drain can be flushed or drained.
- Condensate disposal pan eliminates plumbing.
- Condensate elimination is automatic and non-electric.
- Interior incandescent lighting with manual on/off switch.

### Doors

- Self-closing doors with key locks.
- Magnetic gasket provides positive sealing of doors.
- Pilasters and 2 shelves per doors included.
- Door handles protrude 1<sup>3</sup>/<sub>4</sub>".
- Field reversible door hinges with hinge kit accessories.

### Models Available

- Two and three door models.
- Four lengths are available: 59", 69", 79", and 92<sup>1</sup>/<sub>2</sub>".
- Two to five straight wall keg capacity.

### Application

- These models provide applications in clubs, restaurants, hospitality areas in hotels, etc.
- Holds extra kegs or can be used for cans and/or bottled beverages.
- Extra shelves can be added for full presentation of beverage products.

### Refrigeration System

- Refrigeration system factory balanced using environmental friendly CFC-free R134a refrigerant for compliance to environmentally safety concerns.
- Forced air refrigeration systems keeps cold air circulating to provide ample capacity to chill and hold products between 32° to 38°F.
- Factory pre-engineered capillary tube system with oversized condenser and evaporator to reduce product pull down time and to consistently maintain 32° to 38°F interior cabinet temperature (non-adjustable capillary tube system superior to problematic expansion valve).
- Evaporator is epoxy coated at the time of manufacture to eliminate the potential of corrosion.
- Nine setting temperature control.
- Air vents on sides to maximize the flow of fresh air through the condenser.
- Slide out condensing unit can be accessed and easily serviced by a single repair-person, reducing billable service time.
- Self-contained refrigeration system is ready to plug in.

### Electrical Characteristics

- 120 Volts, 60 cycle, 1 phase. 15 Amp dedicated, sole use circuit is required.
- Cord set with NEMA 5-15 plug is included.

### Warranty (USA)

- 1 Year parts and labor warranty.
- 5 Year compressor warranty.

Specifications subject to change without notice.



**SUPERIOR WARRANTY**  
1 YEAR LABOR  
1 YEAR PARTS  
5 YEAR COMPRESSOR

Superior REFRIGERATION  
Products are Certified to NSF Standard

**7**



Made in the U.S.A.



127134



126987



127143

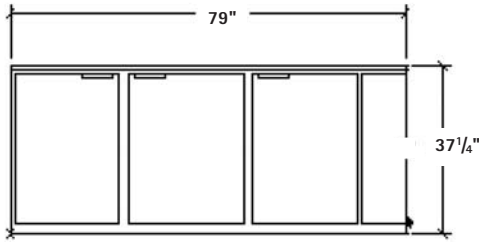


127145

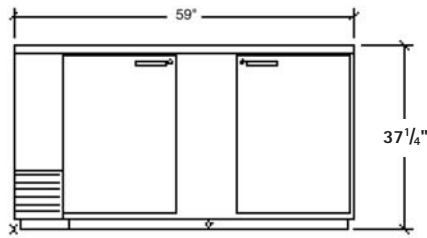


# BACK BAR 27" STANDARD DEPTH STORAGE COOLER

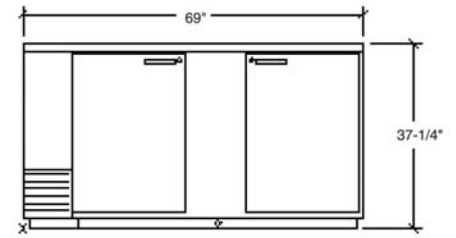
SPC: 127145  
Front View



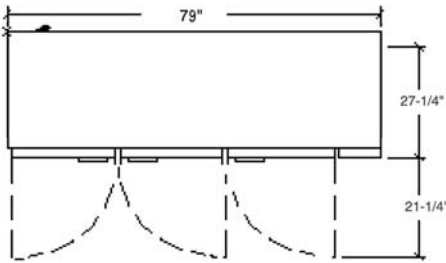
SPC: 126987 and SPC: 127135  
Front View



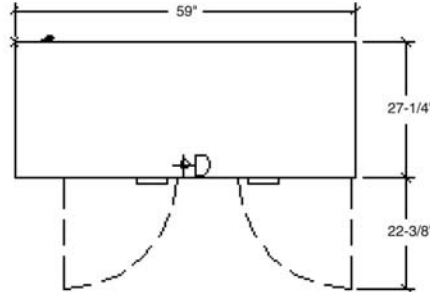
SPC: 127143 and SPC: 127136  
Front View



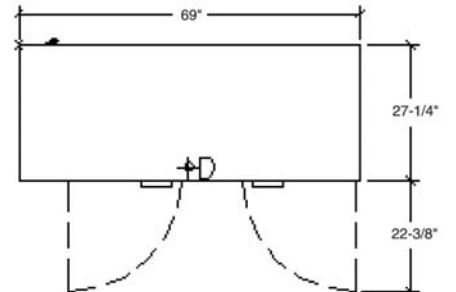
SPC: 127145 Top View



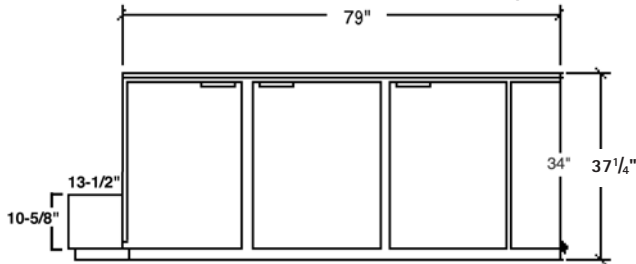
SPC: 126987 and SPC: 127135 Top View



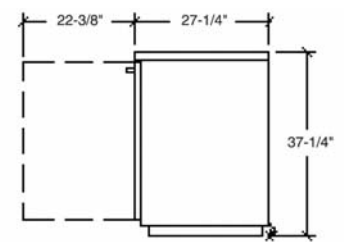
SPC: 127143 and SPC: 127136 Top View



SPC: 127134 Front View (with End Compressor)



Common End View



All models hold straight wall and barrel style kegs.

All models have 21" x 31" clear door opening

## ROUGH-IN DATA

Stainless Steel Front with Grey Vinyl Ends and Backs													
Model	Doors	Capacity Cu. Ft.	Number of Kegs SW**	Number of Kegs Barrel	Number of Shelves	Dimensions W x D x H	H.P.	Volts	Phase	Amps	NEMA Config.	Cord Length	Crated Weight
127135	2	23.7	2	2	4	59" x 27" x 37 1/4"	1/3	120	1	7.2	5-15	6'	315
127136	2	28.0	3	2	4	69" x 27" x 37 1/4"	1/3	120	1	7.2	5-15	6'	372
127134*	3	34.2	5	4	6	92 1/2" x 27" x 37 1/4"	1/3	120	1	7.2	5-15	6'	420
Black Vinyl													
126987	2	23.7	2	2	4	59" x 27" x 37 1/4"	1/3	120	1	7.2	5-15	6'	315
127143	2	28.0	3	2	4	69" x 27" x 37 1/4"	1/3	120	1	7.2	5-15	6'	372
127145	3	33.3	4	3	6	79" x 27" x 37 1/4"	1/3	120	1	7.2	5-15	6'	405

\*Cabinet is 79" in width, 92 1/2" with end mount compressor. Depth with doors opened 90° is 49 5/8". Clear door width 21" x 31". \*\*Straight Wall. No plumbing connection or condensate. Includes cord and plug set. Cord and plug - back left end. Made exclusively for Next Day Gourmet® by Beverage Air. Simple plug in installation.

## OPTIONAL ACCESSORIES

### Caster set with Brakes

- SPC: 809407 APN: 4344149 - 3" Casters with 2 brackets for 59" and 69" models.
- SPC: 039302 APN: 0194274 - 3" Casters with 3 brakes for 79" and 92 1/2" models.

### Replacement Clips

- SPC: 834509 APN: 4344156

Extra shelf clips - dozen

### Stainless Steel Cleaner

- SPC: 706459 APN: 9508235 21 1/2 oz can. Cleans and polishes without leaving an oily film.

### Also Available

- Extra shelves
- Stainless steel finish.