



BACK BAR 23" SHALLOW DEPTH STORAGE AND DISPLAY COOLERS



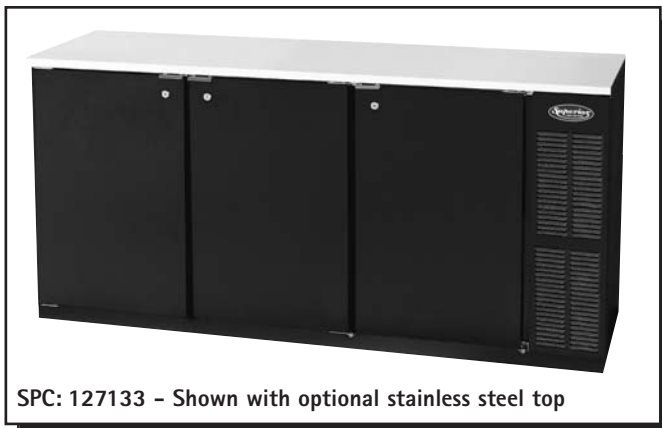
SPC: 871465
APN: 6382196



Made in the U.S.A.



SPC: 871466
APN: 9382193



SPC: 127133 - Shown with optional stainless steel top

SPC	APN	SPC	APN
871466	9382193	127133	-----
871465	6382196	126977	-----
022528	0098392	022520	0098327

SPECIFICATIONS/FEATURES

Construction

- Exterior: Black 10 mil thick wear resistant vinyl (SPC: 871466 APN: 9382193 and SPC: 127133).
- SPC: 126977 and SPC: 022520 APN: 0098327 with optional stainless steel front and sides.
- SPC: 871465 APN: 6382196 and SPC: 126977 Black with glass doors.
- Galvanized top for undercounter applications.
- Interior: Long lasting heavy duty rust resistant galvanized steel.
- Tops: Equipped with a galvanized sub top. Only 34" high. Optional two-inch thick stainless steel top is available for 36" standard height.
- Floor: Stainless steel reinforced floor and doorsill (breakers), and are made from heavy duty stainless steel to provide lasting service.
- Cabinet insulation is energy saving, foamed-in-place CFC-free polyurethane, that helps to provide maximum operating efficiency; and also enhances the structural strength of the overall construction of the cabinet. Minimum of 2" thick.
- Easily accessible front drain can be flushed or drained.
- Condensate disposal pan eliminates plumbing.
- Condensate elimination is automatic and non-electric.
- Interior incandescent lighting with manual on/off switch.

Doors/Lids

- Self closing glass doors have triple pane glass and no locks.
- Solid door models are self closing with key locks.
- Magnetic gasket provides positive door sealing
- Doors overlap mullions for positive seal.
- Pilasters and 2 shelves per doors included.
- Door handles protrude 1/2".
- Field reversible door hinges with hinge kit accessories.

Models Available

- Two door 48" and three door 72" models are available with two to five straight wall keg capacity.

Application

- These models provide applications in clubs, restaurants, hospitality areas in hotels, etc.
- Holds extra kegs or can be used for cans and/or bottled beverages.
- Extra shelves can be added for full presentation of beverage products.

Refrigeration

- Refrigeration system factors balanced using environmentally friendly CFC-free R134a refrigerant for compliance to environmental safety concerns.
- Forced air refrigeration systems keeps cold air circulating to provide ample capacity to chill and hold products between 32° to 38°F.
- Forced air is projected the length of cabinet across the ceiling.
- Keg storage is maximized in lieu of shelf storage when required.
- Evaporator is epoxy coated at the time of manufacture to eliminate the potential of corrosion.
- Nine setting temperature control.
- Refrigeration is fully accessible behind grill to right side of cabinet. Evaporator located above condensing unit permits full use of interior spaces.
- Slide out condensing unit can be accessed and easily serviced by a single repair-person, reducing billable service time.
- Self-contained refrigeration system is ready to plug in.

Electrical Characteristics

- 120 Volts, 60 cycle, 1 phase. 15 Amp dedicated, sole use circuit is required.
- Cord set with NEMA 5-15 plug is included.

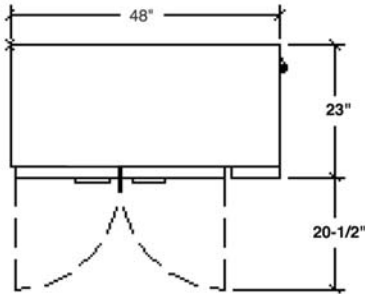
Warranty (USA)

- 1 Year parts and labor warranty.
- 5 Year compressor warranty.

Specifications subject to change without notice.

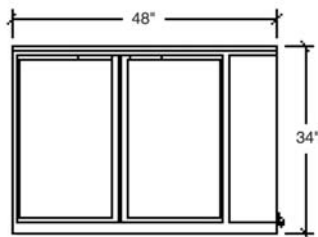


BACK BAR, 23" SHALLOW DEPTH STORAGE AND DISPLAY COOLERS



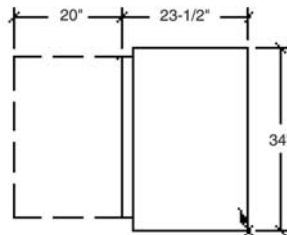
SPC	APN
871465	6382196
871466	9382193
022528	0098392

Top View

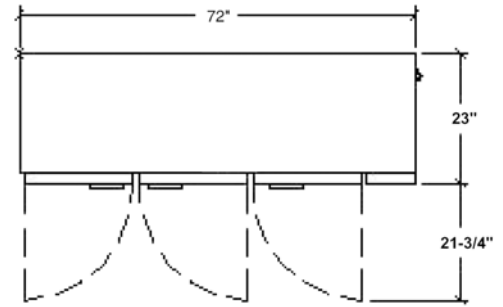


SPC	APN
871465	6382196
871466	9382193
022528	0098392

Front View

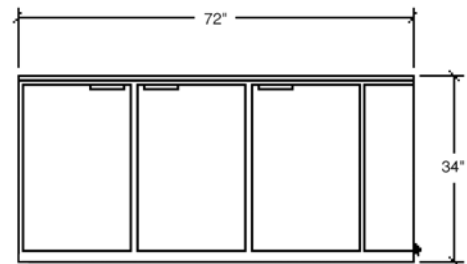


Common End View



SPC	APN
126977	-----
127133	-----
022520	0098327

Top View



SPC	APN
126977	-----
127133	-----
022520	0098327

Front View

ROUGH-IN DATA

SPC	APN	Number of Doors	Capacity of SW* Kegs	Number of Cubic Feet	Dimensions Shelves	W x D x H	H.P.	Volts	Phase	NEMA Amps	Cord Config.	Crated Length	Weight
871466	9382193	2 Black	2	12.4	4	48" x 23" x 34"	1/4	120	1	6.8	5-15P	6'	245
871465	6382196	2 Glass	2	12.4	4	48" x 23" x 34"	1/4	120	1	6.8	5-15P	6'	277
022528	0098392	2 Stainless	2	12.4	4	48" x 23" x 34"	1/4	120	1	6.8	5-15P	6'	245
127133	-----	3 Black	3	20.6	6	72" x 23" x 34"	1/4	120	1	7.3	5-15P	6'	326
126977	-----	3 Glass	3	20.6	6	72" x 23" x 34"	1/4	120	1	7.3	5-15P	6'	374
022520	0098327	3 Stainless	3	20.6	6	72" x 23" x 34"	1/4	120	1	7.3	5-15P	6'	326

Note: All of these models come with a galvanized sub top and galvanized back for under counter application. Add 1/2" to depth for door handles.
 Easy to install. No plumbing connection. Cord and plug back right end. Made exclusively for Next Day Gourmet® by Beverage Air.
 *Straight wall. Kegs only. Old barrel type kegs will not pass through doors.

OPTIONAL ACCESSORIES

Casters

- SPC: 809417 APN: 8344145
5" High casters with 1/8" diameter stem with 2 front brakes, set of 4

Replacement Shelf Clips

- SPC: 834509 APN: 4344156
Extra shelf clip - dozen
- Stainless steel top - must be specified when cooler is ordered and will ship installed from the factory
- Extra shelves

Stainless Steel Cleaner

- SPC: 706459 APN: 9508235
21 1/2 oz can. Cleans and polishes without leaving an oily film

ALSO AVAILABLE

- 27" Standard depth models
- Remote models
- Stainless steel exterior
- Stainless steel interior